



## TECHNICAL DATA

## Mustwall

Sound insulation for walls and floors

### Technical specification

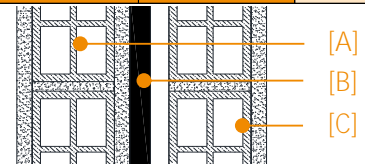
..... mm acoustic insulation panels, made of SBR (Stirene Butadiene Rubber) rubber granules and EPDM (Ethylene Propylene Diene Monomer) rubber granules compacted using a polyurethane binder in a hot process. A non-woven, non-stretch synthetic backing is applied on both sides for added protection. The panels dimensions are 1,2 m length and 1 m width with a density of ..... kg/m<sup>3</sup>.

- **durable material**
- **easy to install**
- **high resistance to humidity and condensation**



PHYSICAL CHARACTERISTICS	Standard	Unit	10	20	Tolerance
Thickness		mm	10	20	± 1
Length		m	1,20		± 0,01
Width		m	1,00		± 0,01
Density		kg/m <sup>3</sup>	800	700	± 5%
Superficial weight		kg/m <sup>2</sup>	8,00	14,00	± 5%
Colour			grey / black		

ACOUSTIC CHARACTERISTICS	Standard	Unit	10	20	Tolerance
Wall composition - 260 mm thick					
A: plaster 15 mm, hollow brick 80 mm, plaster 10 mm					[A]
B: Mustwall and air cavity					[B]
C: hollow brick 80 mm, plaster 15 mm					[C]
Transmission Loss Rw	EN ISO 10140	dB	53 <b>(1)</b>	55 <b>(2)</b>	



TECHNICAL CHARACTERISTICS	Standard	Unit	10	20	Tolerance
Thermal conductivity coefficient (λ)	EN 12667	W/m <sup>2</sup> K	0,109		
Fire grade	EN 13501-1		F		

### PACKING AND STORING

Each pallet is wrapped and protected with waterproof polythene film. Inside storage is recommended to avoid possible wet storing.

Test Report n. 3903/RP/05 of 2005: ITC of San Giuliano Milanese (MI)

Test Report n. 4267/RP/06 of 2006: ITC of San Giuliano Milanese (MI)

The suggestions and technical information given above represent our knowledge regarding the properties and the product's uses. ISOLGOMMA reserve the right to modify or update this data without prior notice. This document is the property of ISOLGOMMA and all rights are therefore reserved.



TECHNICAL DATA

Mustwall

Sound insulation for walls and floors

INSTALLATION INSTRUCTIONS

DOUBLE WALL



Lay the under wall strip in the dry floor.  
Build the wall.



Build up the wall by caring to joint the blocks with mortar on both vertical and horizontal joints.



Apply in the first wall a layer of row mortar of about 1 cm thickness.

GLUE APPLICATION



Apply the glue on the panel by spreading it on dots.  
(suggested glue Knauf Perfix)



Apply the panel on the wall by forcing with homogeneous pressure.

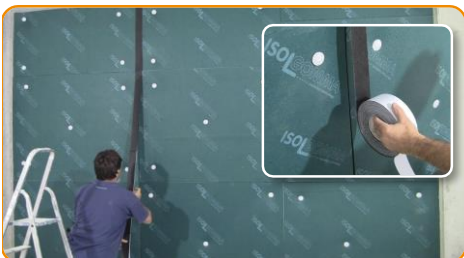
NAILS APPLICATION



Place the panel on the right wall position and produce 5 holes per panel with the driller (one in the centre and one in the four corners)



Apply the five plastic nails with the hammer.



When all panels are fixed seal the panel joints with the "Stik" tape.



Build the second wall with the same process of the first one and insert the panel in the cavity



Realize the final plastering.